

# APPBP1/6xHis-UBA3

Cat. # B1400, B1401

**Also Known as:** APPBP1 (NAE1;HPP1; ula-1; A-116A10.1); UBA3 (UBE1C; hUBA3; MGC22384; DKFZp566J164)

**NCBI Reference:** NM\_003905 (APPBP1); NM\_003968 (UBA3)

**MW (no tag):** APPBP1 (60.2 kDa), UBA (51.8 kDa)

**Species:** Human

**Source:** Bacterial recombinant

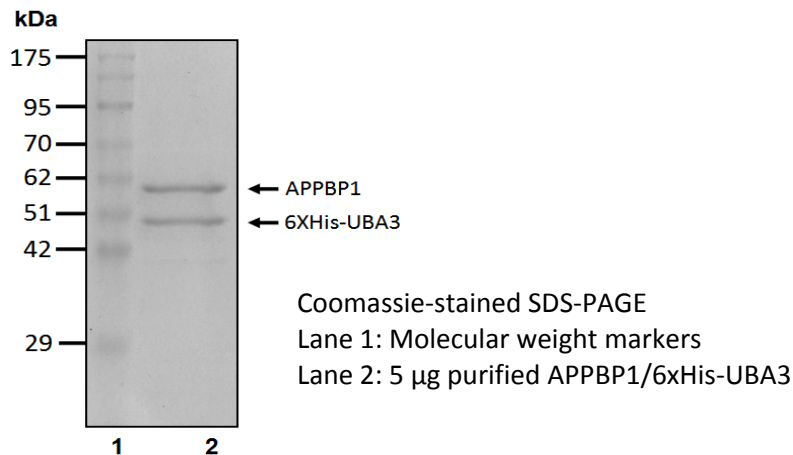
**Tag:** 6xHis

**Stock Buffer:** 20 mM Tris, 150 mM NaCl, 2 mM  $\beta$ ME, 10% Glycerol

**Concentration:** See tube label

**Quality Assurance:** ~95% by SDS-PAGE

## Image



**Description:** APPBP1/UBA3 is the heterodimeric E1 enzyme that conjugates Nedd8 to protein substrates. Nedd8 is conjugated onto the catalytic cysteine residue of UBA3 by formation of a thioester bond in an ATP-dependent reaction. The activated Nedd8 is then passed on to an E2 (Ubc12) to be finally attached to a substrate. Nedd8 is mainly conjugated on Cullins to increase the activity of the Cullin – RING E3 Ub ligases.

**Storage:** Store at -80°C; avoid multiple freeze-thaw cycles

**Note:** N/A

**Literature:**

1. Whitby FG, *et al.* (1998) J Biol Chem 273(52), 34983 – 34991.
2. Osaka F, *et al.* (1998) Genes Dev 12(15), 2263 – 2268.
3. Walden H, *et al.* (2003) Mol Cell 12(6), 1427 – 1437.
4. Schulman BA, *et al.* (2009) Nat Rev Mol Biol 10(5), 319 – 331.

